

THE BERKSHIRE NEWS

NOVEMBER 2024



AMERICAN
BERKSHIRE
— ASSOCIATION —





COMMERCIAL ORIENTED BERKSHIRES AVAILABLE

- 100% ABA Registered, 400 sow herd
- All gilt and boar data submitted to STAGES™ with groups coming off test monthly
- Selection focused on frame, length, soundness, growth and maternal traits from high muscle quality lines
- High health, triple negative perfect for repopulations
- Semen available, via UPS (Monday and Thursday collections). Boar specific or pooled.
Boar inventory spreadsheet available on our website
- Delivery available

CEDAR RIDGE FARMS • RED BUD, IL
YOUR QUALITY SEEDSTOCK SOURCE FOR OVER 70 YEARS!

Freddie, Mike, Randy, Stan, Dennis and Bob Grohmann
Freddie's Cell: (618) 791-4361 • Office: (618) 473-2325 • CedarRidgeGenetics.com

Here's a dirty little secret...
**50% OF THE GENETICS IN A
PROGENY TEST COME FROM THE FEMALES!**

**Fly'n K Berkshires has some of the most
elite proven set of meat quality sows in the nation.**

Our entire sow herd is Stress and Napole negative.
Many of our elite dams have been Geneseek HD50K DNA tested in addition to 100% of our herd sires.



ABA 6044 • REG. #135544009
FKB5 LADY IMF 52-9



ABA 6043 • REG. #135544006
FKB5 LADY IMF 52-6

These 2 littermates have been the foundation of our herd for many years. They just farrowed their 19th and 17th litters respectively and will be greatly missed. 6044 and 6043 (as we call them) have been our top 2 sows for the past 5 years according to the STAGES database. Their offspring have continued to generate very productive females that farrow unassisted, breed back easily, and their udders dry up and stay productive.

BOARS CURRENTLY BEING PROGENY TESTED:

FKB2 SEAL Team 6 26-8 • FKB1 Lakota 17-4 • KURO0 Saki II 95-9
KURO1 Rumbolds Peter Lad 14 15-9 • DKNS3 Django 7-3

BOARS, BRED FEMALES, AND OPEN GILTS AVAILABLE YEAR AROUND.
CHECK OUR WEBSITE FOR UP TO DATE AVAILABILITY



LANCE AND KRISTI KNOBLOCH & FAMILY

Alvord, IA • 605-366-4385 • kance@alliancecom.net
flynkberks.com



PRESIDENT'S PERSPECTIVE

On a recent trip to North Carolina to deliver a bit of relief to flood victims, Heather and I were reminded of what service means. We met up with a lady, Kristen Howell. As we listened to her story about closing her diner so she and her 5 employees could eventually serve over 25,000 meals to whoever needed them, I thought I needed to reflect on my service.

So how does this pertain to the ABA? First, let's look at the association's role in service. The ABA should be focused on not only serving the membership with pedigree work, promotional materials, and other daily tasks, but it should work tirelessly to reach out on a personal basis to the membership and also consumers. Further, the association should be willing to put egos aside to work together with all purebred swine associations to help serve all members in various activities.

Second, how does service pertain to the ABA Board of Directors? Quite simply, if one is elected to serve as a Director, their responsibility is to be actively involved in monthly meetings, committee assignments, and involvement at various events throughout the year. Most importantly, a Director should put the betterment of the Association as a whole above their individual operation.

Finally, how does service pertain to us as a people? In a society full of egos, self-interest, and prejudice, service takes on a very large meaning. We as a people need to be willing to do better at recognizing others needs, focusing on how to address those needs, and be willing to set our prejudices aside to enable us to serve without judgment.

If all of us as the ABA, and other organizations such as Certified Pedigree Swine and the National Swine Registry would focus on service to the purebred swine industry and society in general, instead of our egos and self-promotion, the world would be a much better place, and the purebred swine industry will be much stronger. In North Carolina, I was able to see people working together to meet the needs of others one person at a time. Imagine how much we could accomplish if we focused on serving the purebred hog industry and helping each other accomplish our goals. Success may not happen overnight, but it could impact one operation at a time.

Pete Brummer



The 16th Keystone Classic Steak Cookoff was held on Sunday, October 6, 2024 in Harrisburg, PA.

Special thanks to Pete Brummer & Family for donating their delicious Registered Berkshire Pork chops. The American Berkshire Association gave \$750 cash prizes and glass cutting boards to the top 5 winners!

- Pork Division Winner: Michelle Perelka (PA)
- 2nd Place: Jason Willis (PA)
- 3rd Place: Joseph Christopher (NY)
- 4th Place: Kurtis Upton (PA)
- 5th Place: Jeffrey Campbell (MD)
- 6th Place: Christine Johnson (PA)
- 7th Place: Elizabeth Lipa (TN)

BOARD OF DIRECTORS

Pete Brummer, *President*
 Jeff Wippel, *Vice President*
 Jeff Smith, *Exec. Committee*
 John Barnes
 Lane Bennett
 Ernie Birchmeier
 Brice Conover
 Lance Knobloch
 Austin Lane

ABA STAFF

Rose Criswell
Director of Berkshire Operations
 rose@americanberkshire.com

Drew Farrer
Membership Services Coordinator
 drew@americanberkshire.com

Erin Scott
Berkshire Secretary
 erin@americanberkshire.com

AMERICAN BERKSHIRE ASSOCIATION

2637 Yeager Rd.
 West Lafayette, IN 47906
 (765) 497-3618
 office@americanberkshire.com
 americanberkshire.com

AD SIZES

FULL PAGE

8.375" x 10.875"
 with .25" bleed

HALF PAGE

7.375" x 4.8056"

QUARTER PAGE

3.5556" x 4.8056"

The American Berkshire Association offers FREE design services to help you create an advertisement that captures your business' brand.

Have an idea for an article, or event that would be perfect to have featured in The Berkshire News? We'd love to discuss! Email us to share your ideas.



ADVERTISE TO A TARGETED BERKSHIRE AUDIENCE

The Berkshire News is a quarterly publication of the American Berkshire Association that will be mailed directly to hundreds of members of the ABA. All issues will be emailed to 3,000 subscribers and published on the ABA website for thousands more to see. The ABA team is eager and excited to partner with you for your advertising needs.

2025 EDITORIAL CALENDAR

ISSUE	AD DEADLINE	MAIL DATE	ONLINE DATE
FEBRUARY	JANUARY 10	FEBRUARY 5	FEBRUARY 9
150 th ISSUE	APRIL 5	MAY 15	MAY 18
HERD SIRE	JULY 9	AUGUST 6	AUGUST 10
NOVEMBER	OCTOBER 14	NOVEMBER 12	NOVEMBER 16

ADVERTISEMENT RATES

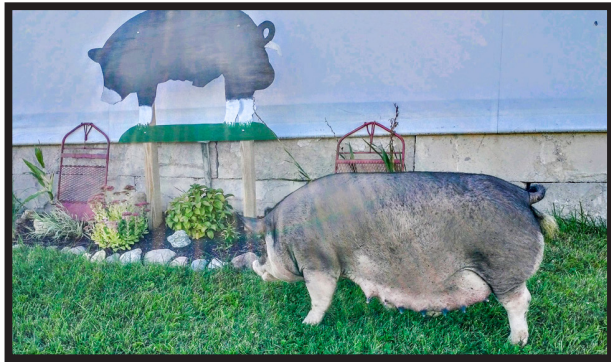
PRIME POSITIONS	PRICE PER ISSUE	CONTRACT PRICE
INSIDE FRONT COVER	\$425	\$1,500 save \$200
BACK COVER	\$425	\$1,500 save \$200

PAGE SIZES	PRICE PER ISSUE	CONTRACT PRICE
FULL PAGE	\$350	\$1,250 save \$150
HALF PAGE	\$250	
QUARTER PAGE	\$125	

PRODUCTION GENETICS

fueled by

JBM MACHINE SIRES



Our 4-3 sow is the last direct daughter of a sow we purchased from Myron Dammann at the National Barrow Show. Triple M Farms is the foundation of our herd. JBM Hustle Belle 4-3 is the Dam of the Noah Carroll Austin selection and is the anchor double bred foundation Grand Dam of JBM2 Machine 30-2.



JBM2 MACHINE 30-1

Be on the lookout for upcoming Machine meat quality and production genetics!

MACHINE SUCCESS AT THE NBS:

- 30 entries had Machine genetics in their pedigrees
- JBM2 Machine 30-1 was named Premier Sire
- Special thank you to Noah Carroll, MN for purchasing our JBM2 MACHINE 30-2 son for \$1,000

Congratulations to AJC Berkshires for exhibiting the Reserve Champion Purebred Truckload at the 2024 National Barrow Show, sired by JBM2 Machine 30-1!

TRUCKLOAD AVERAGES:

LIVE WEIGHT	CARCASS WEIGHT	CARCASS LENGTH	10TH RIB BACKFAT	LOIN EYE	QUALITY SCORE	MINOLTA	PH	IMF
268 lbs.	196.5 lbs.	32.3 LONGEST IN THE TEST!	0.73	6.86	2.8 HIGHEST IN THE TEST!	45.94 MINOLTA & PH WERE IN THE TOP 2 FOR IDEAL SCORING FOR PUREBREDS	5.8	3.18 BIOTRONICS SCAN DATA

COME VISIT OR GIVE US A CALL!

Joe McKenna
Home of JBM Berkshires

Phone: 815 - 569 - 2584
16344 Mill Rd., Capron, IL 61012

Behind on your registrations? Catch up before the New Year!

Late fees on litter registrations and transfers are waived for the month of December!

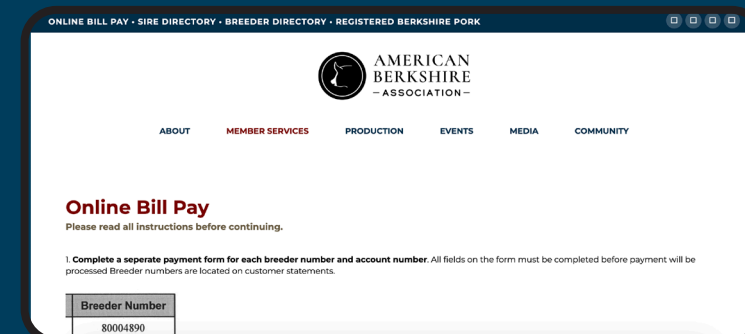


For more information, scan the code or visit americanberkshire.com/pedigree



PAY YOUR BILL ONLINE

With ABA's online bill pay, you can keep your account current from anywhere at anytime.



Scan the code or visit americanberkshire.com to get started.



SHOW REPORT

PANDEMONIUM IN TIMONIUM & ABA IN THE SPOTLIGHT

Aug. 30 - Sept. 1, 2024 | Maryland State Fairgrounds | Judged by Brice Conover, IA



**OVERALL PUREBRED GILT,
CHAMPION BERKSHIRE GILT**
Jamie Geyer, KS
SPECIAL EFFECT x ALL IN



**RESERVE PUREBRED GILT,
CHAMPION CHESTER GILT**
Chloe Hillegass, PA
FRICTION x DELTA

**3RD OVERALL PUREBRED GILT,
CHAMPION SPOT GILT**
Jamie Geyer, KS
WHITE LINES x LAMPOON

**4TH OVERALL PUREBRED GILT,
RESERVE BERKSHIRE GILT**
Alyssa Spielman, MD
OTTER'S POCKET x TOP SHELF

**5TH OVERALL PUREBRED GILT,
CHAMPION DUROC GILT**
Travis Oliver, KS
STATEMENT DAY x 14 KARAT



**OVERALL PUREBRED BARROW,
CHAMPION SPOT BARROW**
Estella Gover, MD
TALK TO ME x SPEAK UP



**RESERVE PUREBRED BARROW,
CHAMPION DUROC BARROW**
Taya Chelmo, KS
SWING YOUR SWORD x 14 KARAT

**3RD OVERALL PUREBRED BARROW,
CHAMPION BERKSHIRE BARROW**
Travis Oliver, KS
COMMITMENT x ROCKSTAR

**4TH OVERALL PUREBRED BARROW,
RESERVE BERKSHIRE BARROW**
Madison Ross, OH
TOP IT OFF x 2 POPS

**5TH OVERALL PUREBRED BARROW,
CHAMPION HERFORD BARROW**
Andrew Knatz, MD
TRANSFORMER x RUB IT IN



CHAMPION BERKSHIRE BOAR
Alyssa Spielman, MD
OVER THE TOP x BUENO



CHAMPION BERKSHIRE GILT
Jamie Geyer, KS
SPECIAL EFFECT x ALL IN



CHAMPION BERKSHIRE BARROW
Brent Higgs, MD
AFTERTHOUGHT x TOP SHELF



New at the stud..

BBRI4

TOP NOTCH

5-5

**CDEC2 OVER THE TOP 17-4
X WTX1 BUENO 126-1**

BRED BY MASON SPEILMAN, MD

NAPOLE AND STRESS
NEGATIVE

\$2,500
PRIVATE TREATY PURCHASE

4 TIME CHAMPION

**2024 SUPREME BOAR
AT THE CARROLL CO. FAIR, MD
2024 SUPREME BOAR AT THE
MD ST. FAIR 4-H AND OPEN SHOW**

2024 ABA IN THE SPOTLIGHT CHAMPION BERK BOAR

TOP NOTCH'S DAM PRODUCED:

- Reserve Berk Market Hog, 2023 MLE
- High point berk on 2023 ECLA
- Reserve Grand Market Hog & Champion Berk Market Hog, 2023 Carroll County Fair, MD
- Reserve Berk Gilt & 5th Overall Gilt, 2023 Pandemonium In Timonium Junior Show, MD
- Champion Purebred, 2023 FFA Elite Show, MI
- Reserve Berk Market Hog, 2024 Carroll County Fair, MD

TOP NOTCH'S LITTERMATES:

- Champion Berk Gilt, The Great Frederick Fair 2024

TOP NOTCH'S HALF SISTER PRODUCED:

- Supreme Gilt, 2024 Carroll County Fair, MD
- Reserve Berk Gilt and 4th Overall Gilt, 2024 Pandemonium In Timonium Junior Show, MD
- Many jackpot winners

Semen Available!

**FEEDER PIGS • FAT HOGS • SEMEN • SHOW PIGS
AVAILABLE YEAR AROUND**

JEFF WIPPEL & FAMILY

**740-404-1148 OINK.BERKS@GMAIL.COM
WIPPELFAMILYBERKS.COM**





RESERVE BERKSHIRE BOAR
Georgia Clisham, MD
KICKIN ROCKS x JET BLACK



RESERVE BERKSHIRE GILT
Alyssa Spielman, MD
OTTER'S POCKET x TOP SHELF



RESERVE BERKSHIRE BARROW
Braelyn Francis, MD
SOUTHERN THUNDER x BAD MEDICINE

FALL EXPOSITION

Oct. 8 -12, 2024 | Stephens County Fairgrounds, OK | Judged by Ben Moyer, OH

6 head averaged **\$1,075** for a total of **\$6,450**



GRAND CHAMPION BERKSHIRE GILT
Brody & Kyser Nemecek, KS

NNMS1 RIDE THE LIGHTNING 34-9
x BGRB1 POUNDTOWN 84-2

PURCHASED BY:
KPO Livestock, OK
for \$1,500



RESERVE CHAMPION BERKSHIRE GILT
Hadley Huseman, KS

BGRB1 DIG DEEP 18-7
x BYSN1 TOP SHELF 17-8

PURCHASED BY:
Four T Farms, IA
for \$2,100

CLASS 1 WINNER:
Tatum Smith, OK
CDEC2 OVER THE TOP 17-4 x DJC1 FAIR WARNING 2-7
SOLD TO DOC ROC FARMS, OK FOR \$600

FROM CLASS 2:
Tanner Vaughan, OK
MWCW2 TOP SECRET 17-5 x HH7 OUTSIDE THE LINES 184-1
SOLD TO TRENTON VAUGHAN, OK FOR \$900

FROM CLASS 2:
Kylee Townsend, OK
MWCW2 TOP SECRET 17-5 x BYSN1 TOP SHELF 17-8
SOLD TO WETOVICK SWINE FARM, NE FOR \$300

FROM CLASS 3:
Brody & Kyser Nemecek, KS
KPO2 AFTERTHOUGHT 9-4 x ASF8 CURE ALL 75-2
SOLD TO WETOVICK SWINE FARM, NE FOR \$1,050



BOARS OF FALL HIGHEST-SELLING BERKSHIRE
Higbie Livestock, KS

OVER THE TOP
x WALKS ALONE

PURCHASED BY:
Real Hog Farm, TX
for \$1,100

For more information
on ABA shows,
scan the code or visit
americanberkshire.com



SHOWN BY
HADLEY HUSEMAN, KS



JR. CHAMPION BERK GILT
2024 FALL EXPOSITION

SIRED BY **RIDE THE LIGHTNING**



CHAMPION BERK GILT & 5TH OVERALL
2024 KANSAS JR. LIVESTOCK SHOW

GET READY TO THRIVE IN 2025!

BE ON THE LOOKOUT FOR SALES IN EARLY SPRING



CHAMPION BERK GILT & 5TH OVERALL
2024 KANSAS ST. FAIR

SHOWN BY
HADLEY HUSEMAN, KS



SIRED BY **DIG DEEP**
SOLD AT THE **SWEETHEARTS PIG SALE, IN**



6TH OVERALL
2024 TULSA ST. FAIR

SHOWN BY
CAUY CRAIG, OK

SIRED BY **RIDE THE LIGHTNING**



MIKE FAGG • 812-249-2851 • CLAY CITY, IN

SAVE THE DATES FOR THESE 2025 SHOWS



JAN. 13-18, 2025
PERRY, GEORGIA



FEB. 26 - MARCH 1, 2025
BELTON, TX



JUNE 8-14, 2025
INDIANAPOLIS, IN



JUNE 29- JULY 5, 2025
LOUISVILLE, KY



SCAN FOR MORE INFO
OR VISIT AMERICANBERKSHIRE.COM

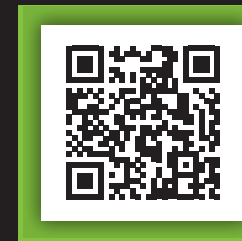


CONGRATULATIONS
TO ABA ON 150 YEARS

ANDY: (309) 678-8336

JEFF: (309) 678-7678

FOLLOW US
ON FACEBOOK!



Thank you for a great
Berkshire year to our
customers in:

NORTH CAROLINA
SOUTH CAROLINA
VIRGINIA
CONNECTICUT
MARYLAND
PENNSYLVANIA

BRAVO CATTLE, LLC

ANGUS CATTLE • BERKSHIRE HOGS • ROYAL WHITE SHEEP

John & Emily Barnes • Summerfield, NC

www.bravocattlellc.com

John cell 252-230-0650 • bravocattle@gmail.com



ENTRIES DUE DEC. 12

ENTER ONLINE AT AMERICANBERKSHIRE.COM





Pioneering with Berkshires: Hands-On Learning at UW-Platteville

written by Mallorie Boggs

Think back to how you began your journey with the Berkshire breed. Many of us have the tradition of our families to thank. Some may have learned from a family friend, 4-H, or FFA leader. For the University of Wisconsin-Platteville, students have a unique opportunity to learn about the swine industry and the Berkshire breed in a unique, hands-on way.

Located in the southwest corner of Wisconsin, the midwest community of Platteville is covered in rolling hills, and farms. Within this close-knit community is a well-regarded institution with a strong agriculture program. UW-Platteville's Pioneer

Farm is a key part of student's learning experiences. This 430-acre working farm is home to dairy, swine, beef operations, corn, oats, and alfalfa crops.

"The mission of Pioneer Farm is to be a working, living laboratory that serves the University of Wisconsin-Platteville," said Alicia Prill-Adams, assistant farm director of Pioneer Farm. With education, demonstration, and research at the heart of what they do, students are equipped to grow their passions.

In the early 2000s, UW-Platteville built their current swine facilities. Due to their limited land base and

wanting to avoid a liquid system, the operation is a hog high rise. Pioneer Farm's Berkshire pig operation is one of the standout programs, offering students insight into heritage breed production and the specifics of pork quality and genetics. Shortly after the current facilities were constructed, their Berkshire herd began with 5 gilts and 1 boar gifted from alum David Gill and his family. Twenty years later, approximately 45 of the 60-65 sow herd at Pioneer Farm is of Berkshire genetics.

They continue to partner with the Gill Family of Pork Chop Ridge on herd sires, such as the 2018 NBS Hog College Berkshire Boar, AUST8



Barstool 20-6. Barstool won the Home Run Derby and sold for \$10,500. They have also partnered with Pork Chop Ridge and Schmaling Brothers Berkshires on HBSP0 Relentless 10-3, the 2020 Reserve Berkshire Boar at The National. UW-Platteville's current herd sire is KPG2 Honor Roll 1-7, a purchase from the 2023 Southwest Type Conference. Diversity in genetics is a continued focus of UW-Platteville. "We don't want to go too far down the show genetics and sacrifice growth and meat quality," said Alicia.

Beyond the farm, students have exhibited UW-Platteville Berkshires at shows including The Exposition, The Recovery Southwest Type Conference, National Barrow Show, and Summer Type Conference.

UW-Platteville's Berkshire program also highlights the value of community and collaboration. The farm partners with industry leaders such as the Wisconsin Pork Association, and the National Pork Producers Council. The UW-Platteville's Block & Bridle Club also hosts a Jackpot Show in May. These partnerships ensure that the genetics remain diverse and high-quality, while also exposing students to the latest in industry standards and trends.

"The students actually learn more about leadership, teamwork, and observation through working here. It is truly hard to explain but the pigs provide a lot of growth for students," Alicia said. "They come in thinking they are just going to do chores and mundane jobs, but find it is so much

more than that." This holistic approach means students not only gain expertise in swine management but also learn how to adapt and make decisions under real-world conditions. For the students who participate in the UW-Platteville Berkshire program, the experience offers a foundation in both agricultural practice and personal growth, preparing them for futures in agriculture and beyond.

As the program continues to evolve, UW-Platteville remains committed to its mission: equipping students with the skills, experience, and connections they need to succeed in the field and contribute to the future of agriculture. •



Built to Thrive.

Oak Hill Berkshires are raised outdoors on pasture and fed a non-GMO feed made right here on the farm, using locally sourced grains. Our focus is on producing Berkshires that thrive on pasture and farrow without assistance.

We're thankful for our customers and look forward to continuing to provide top-quality Berkshire genetics that help your herd thrive. At Oak Hill, we're committed to the health, hardiness, and natural behaviors of our Berkshires, ensuring they meet the highest standards in both field performance and taste. Whether you're expanding your herd or just starting out, let us be your trusted partner in building success from the ground up.



Mapes



Lane Bennett & Family

Calhoun, GA • (770) 881-6138 • Facebook

NAPOLE & STRESS NEGATIVE



**BRED BY WALKER PARK HAMPS, MO
OWNED BY SHIPLEY & SNYDER BERKS**

WPH4

Game Changer

4-3

**GMBM3 SPECIAL JEWELER 3-9
x GRDV1 HIGH CLASS JEWELER 2-4**

Game Changer was champion Class 3 Berkshire boar at the 2024 Missouri State Fair. This was the super tough made boar that was heavy boned, thick made, big ribbed and packed full of muscle. This guy has a monster big top and rump. He is strong pasterned and very athletic on his feet and legs. Game Changer is blown wide open front and rear. Study his 3/4 rump picture. If you need thickness and muscle in a square made, big ribbed package, thus guy can help! Notice his pedigree; he is sired by the Grand Champion boar from the 2023 Missouri State Fair. His granddam and his dam are littermate sisters and GMBM2 Lightning 2-1 is the dam of Summit. Sow power is so important in any pedigree and Game Changer is packed full of sows that have large litters, milk hard and generate into the next generation!

NAPOLE & STRESS NEGATIVE



**BRED BY ERNIE BIRCHMEIER, MI
OWNED BY SHIPLEY & SNYDER BERKS**

BIRC4

Earn It

**BTC2 MIDNIGHT RAIN 106-1 13-6
x SDH8 HIGH HORSE 21-1**

This young boar was 4 1/2 months old when he won champion class 1 boar against older boars at the 2024 WPX. We fell in love with his huge feet and his heaviness of structure. Without a question he was the most flexible, longest strided Berkshire boar at the show. His hip and hind leg is impeccable. Study his thickness of top, his big upper rib cage, his big full square rump. Study how square he is to the ground. This guy will make super competitive barrows and gilts that can compete anywhere. Ernie has a great Berkshire sow herd that generates high quality offspring that will compete at all levels. This boar has zero holes. He is super sound, great hip, wide based, big topped, square to the ground, heavy boned and packed full of muscle with a moderate+ frame size. His daughters will farrow unassisted and flat raise pigs. His dam has raised class winners, 3rd overall at San Antonio and Champion boar at the 2023 Indiana State Fair.

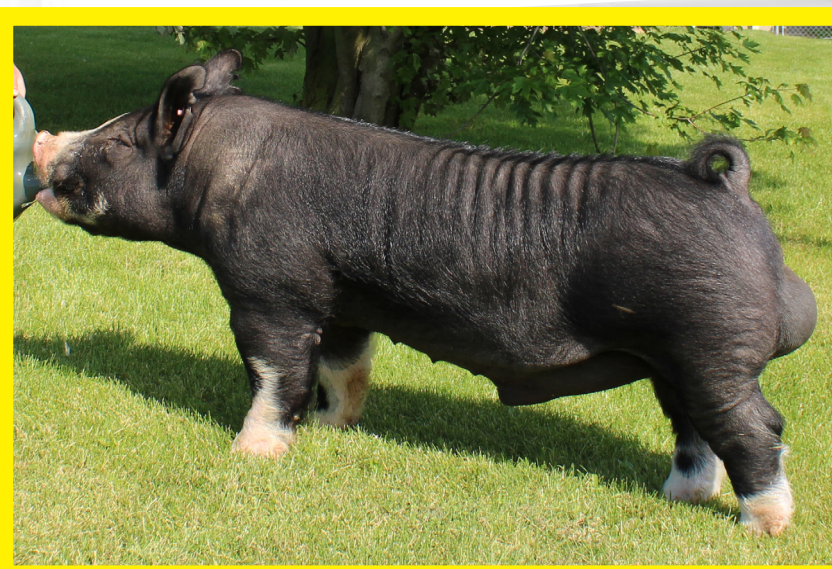
RBVF3

Off Road

**MWCW2 TOP IT OFF 24-1 6-7
x WTXo ABOUT TIME 32-1**

This is one exciting Berkshire boar! He hit us hard when they drove this guy out of the barn. He is far and away the best Berkshire boar we have purchased at an NSR National event in several years. He is one of the heaviest structured, loosest constructed, most flexible boars of any breed you will ever see. He is a heavy boned, clean jointed thick made boar with a big rib cage and lots of center body. His hip and hind leg is ideal with a big massive skull, good neck length and a big full square loose made rump. 7-7 underline with growth, look, design and high quality Berk meat. He is pretty special!

NAPOLE & STRESS NEGATIVE



**BRED BY RBV BERKSHIRES, KY
OWNED BY SHIPLEY & SNYDER BERKS**

GMBM4

Summit

**BYSN1 TOP SHELF 17-8 3-9
x GRDV1 HIGH CLASS JEWELER 2-4**

Summit was the Grand Champion Berkshire boar at the 2024 Missouri State Fair. One of his littermate gilts was Reserve Grand Champion at Iowa and 2 others stood 1 and 2 at Missouri. This is one exciting Berk boar! We have been looking for one this good for a few years. He is so square, so heavy structured, so sound off both ends. When this guy walked in the ring at the Missouri State Fair, I was shocked! I don't know what the true value is of one built this way but I did know he was coming to my house. His dam was 4th overall at the 2022 Team Purebred and went on to be the Grand Gilt at Missouri in 2022. She has produced the Grand boar at 2023 and 2024 Missouri State Fairs. Littermate gilts stood 1 and 2 this year at Missouri and a 3rd littermate was Reserve Champion gilt at the 2024 Iowa State Fair. She absolutely is a generator of high quality show pigs at any level. Summit is as good as I have seen and we are damn proud to own this young powerhouse. His siring ability should be off the charts!
Read more on our website!

NAPOLE & STRESS NEGATIVE



**BRED BY GAGE AND BAILEY MILLER, MO
OWNED BY SHIPLEY & SNYDER BERKS**

Happy Holidays

As the year comes to a close, we want to extend our heartfelt thanks for your trust and partnership.

It's been a pleasure working with you, and we look forward to continuing to provide top-tier genetics and service in the coming year. Wishing you a joyous holiday season and a prosperous new year!

*Randy & Sandy Shipley
Rick, Josie, Jacey & Joslyn Snyder*

SHIPLEY
SWINE GENETICS

866-376-8986

740-745-2911

SHIPLEYSWINE.COM

Kent Feeds and the Advanced Berkshire Feed Study

written by Mallorie Boggs

KENT, is a distinguished animal nutrition industry name dedicated to providing premium feed solutions for livestock producers for nearly 100 years. As part of the KENT Nutrition Group, KENT focuses on research-driven products and innovative nutrition and has been at the forefront of advancing animal health, growth, performance, and farm profitability.

KENT's commitment to sustainability and quality has made them a trusted partner for livestock producers looking to enhance efficiency and meat quality. This dedication is evident in their recent, first-of-its-kind Advanced Berkshire Feed Study. Through this study, KENT applied its expertise to examine the impact of a targeted feeding program on the growth, efficiency, and meat quality of Berkshire pigs, a breed known for its rich marbling and distinctive taste.

The Conception of the Advanced Berkshire Feed Study

The inspiration for this pioneering study began about three years ago with Dr. Michael Edmonds, vice president of swine nutrition at KENT Nutrition Group, and his team. "Discussions came about the Berkshires that no one had ever studied or worked with them in regard to nutrition studies," shared Dr. Edmonds. Traditionally, KENT has focused on lean, commercial

hogs. However, with curiosity and their commitment to innovation, Dr. Edmonds and his team embarked on this unique journey, shifting focus to the slower-growing Berkshire pig, which carries more back fat and marbling—a trait that enhances flavor and tenderness.

"No one had ever really looked at a slower growing pig that has more back fat on it, so there's a little more marbling or fat in that meat that's involved in taste and texture other quality traits," said Dr. Edmonds. Rob Echele, KENT Nutrition Group's swine product manager, remarked on Dr. Edmonds' curiosity: "I would consider Dr. Edmonds very intellectually curious., always considering what-if-we-did-this or what-about-that. He's constantly 'flipping over rocks' and looking for the why pigs perform as they do."

Conducting the Study

The study took place at the 800-acre KENT Research Farm, equipped with a specialized grow-finish barn and a 60-pen nursery barn. For the trial,



Dr. Michael Edmonds, vice president of swine nutrition at KENT Nutrition

KENT partnered with a Berkshire breeder to acquire 493 weaned Berkshire pigs. Over the six-month feed trial, Dr. Edmonds and his team made precise adjustments to the amino acid levels in the pigs' diets, optimizing them for Berkshire pigs' unique growth characteristics.

Key Findings and Impact on Pig Growth and Economics

The study revealed that a diet with lower protein and adjusted amino acids best suited the slower-growing Berkshire breed. This formulation adjustment proved effective, with the



KENT Program-fed pigs gaining approximately 12 pounds more than the control group, achieving a 5% higher average daily gain (ADG). "We just had a larger pig, and the feed cost to put the pounds on was less," Dr. Edmonds explained. Economically, the KENT Program offered significant advantages, with a net return of \$14.67 per hog at a live price of \$1.00 per pound.

Carcass Quality and Meat Testing

After 161 days on the specialized KENT Program diet, the pigs were locally processed and loin eye samples were sent to Iowa State University's Meats Laboratory for comprehensive

meat-quality testing. Key findings included:

- **Color Score:** Improved color scoring for both visual color and L* color, giving a more appealing appearance.
- **Juiciness and Tenderness:** KENT-fed pigs scored higher in juiciness and tenderness while also having a lower chewiness score, enhancing texture.
- **Loin Eye Area:** A larger loin eye area (over 9 square inches), surpassing the control, which highlights improved muscle development.

A Collaborative Success for KENT Feeds

The Advanced Berkshire Feed Study was a collaborative and

groundbreaking effort for KENT. As Dr. Edmonds noted, "Our farm team worked hard on this unique trial and I was with them all the time since it was a large project with a different-feeding pig." This feed study not only advances understanding of Berkshire pig nutrition but also delivers a tailored nutrition program that supports higher growth rates, cost-efficiency, and premium meat quality—underscoring KENT's commitment to innovation and excellence in animal nutrition. •



KENT BERKSHIRE RESEARCH STUDY

TABLE 1
Effect of Feeding Program on Overall Performance and Economics in Grower/Finisher Pigs (Days 0 – 161)

TREATMENTS	CONTROL	KENT PROGRAM
Days 0 -161		
Start Weight	34.5	33.7
Market Weight	288.1	300.6
ADG, lb	1.58	1.66
ADF, lb	5.27	5.42
F/G	3.35	3.27

- Clearly the Kent Program pigs had superior performance when compared to the control.
- Average Daily Gain (ADG) showed the Kent Program pigs gained 5% faster than the control.
- The net return per hog marketed on the Kent Program would be \$14.67 greater at a live price of \$1.00 per pound.
- The precise balancing of nutrition via Kent research resulted in very significant improvements in growth and feed efficiency with marked reduction in cost per pound of gain.
- **The Kent Program contains:**
 - NutriVantage® for swine which helps with reducing mortality in pigs
 - Kent Natural Yeast as a source of brewers yeast which contains a strain of *Saccharomyces cerevisiae*
 - Precisely balanced amino acids



Along with the live trial, Kent partnered with Iowa State University to measure the carcass quality effects of color, marbling, tenderness, purge, flavor, juiciness, etc. on a random sample of pigs from the four test pens.

While visual marbling did not stand out, many other measurements did including:

- ✓ Better values for color score via both Visual Color and L* Color scoring
- ✓ Numerically better juiciness and tenderness scores as well as a lower chewiness score
- ✓ A larger loin eye area in square inches over 9. The average loin eye area in the 2022 Berkshire Progeny Test Ranking was 7.22 based on 290-pound live weight pigs.

(continued)

866-647-1212 • kentfeeds.com

TABLE 2
Effect of Feeding Program on Carcass Quality Measurements

QUALITY MEASURE	CONTROL	KENT PROGRAM
Loin Purge, %	3.90	3.59
Chop Purge, %	1.24	1.43
Visual Color	3.31	3.69
L* Color	46.29	43.30
Loin pH	5.80	5.90
Visual Marbling	3.19	2.13
Cook Loss, %	21.89	21.75
Juiciness Score	6.75	7.38
Tenderness Score	5.88	7.25
Chewiness Score	4.75	4.13
Flavor Score	5.00	5.25
Off Flavor	2.13	2.25
Star-Probe	5.32	5.22
Loin Eye Area, square inches	8.30	9.18

Loin Purge (%): Calculations of amount of fluid lost from the loin (lower levels preferred)

Chop Purge (%): Simulated retail case test by placing a one-inch chop in a plastic bag for 24 hours in refrigeration (lower levels preferred)

Visual Color: Color of a center loin chop based on the Japanese Color Bar: 1 = very light, pale to 6 = very dark red (higher scores preferred)

L* Color: Reflectance measure with a Minolta colorimeter, L* values range from 0 = perfect black to 100 = perfect white. Most pork measure between 35 and 60 (lower values preferred)

Marbling: Estimate of fat in loin, i.e. 3.0 would be 3% fat. A score of 1 is essentially none. Rarely call anything over a 4 to 5 for the upper scores.

Loin pH: pH value of a center loin chop. Most pork will have a pH value between 5.4 and 6.4. (higher values preferred)

Cook Loss: Calculated from the weight of the chop before cooking and weight of the same chop after cooking. These chops were cooked to 145°F on a Ninja Foodie Grill. (lower values preferred)

Sensory Profile: Determined by a trained sensory panel using a 10-point category scale

Juiciness: 1 = dry to 10 = juicy (higher values preferred)

Tenderness: 1 = tough to 10 = tender (higher values preferred)

Chewiness: How long it takes to chew a sample, 1 = not chewy to 10 = very chewy (lower values preferred)

Pork Flavor: 1 = none to 10 = intense (higher values preferred)

Off-Flavor: any flavor other than grilled pork loin, sourness is the most common, 1 = none to 10 = intense (lower values preferred)

Star-Probe: Instrumental measure of tenderness, the amount of force it takes to puncture, shear and compress a cooked pork chop. Measured in three locations of the face of a chop. (lower values preferred)



866-647-1212 • kentfeeds.com

©2024 Kent Nutrition Group, Inc. All rights reserved.



CRUISE CONTROL

CKK3 CRUISE CONTROL is a boar with a pedigree of who's who of the Berkshire sires of the past. His sire 13-2 was a planned mating of a 9 year old Ken Schaffner boar on a 6 year old sow with the influence of Black Mambo, Legend, AJC AC DC, D&W Saki, KSWV Major Move and KSWV Treasure.

6-5 mother has FKB Swamp Donkey, WKF Tex 2-2, WKF Saki, Dream Scheme on both sides of her pedigree.

We all remember the quality of Berkshires Ken Schaffner had and here is a chance to reach back and grab some of that genetics.

6-5 is housed at NIBS. He is pictured at 15 months. He has 7 Meat Quality award winners in his background. Bob said he is the Right kind of Production boar here!

Call Bill or Bob Owen for semen 641-220-3787
Owned by Steve Stassen and Chad Krempfer

PHENOTYPIC ACRES, INC.

As we continue to develop our breeding program, the addition of our young herd sires continue to impress. Our newest addition to the herd, PA4 All You Want, our seventh generation of All You Want, is an excellent example of the type and kind we strive for. Reach out for any and all of your Berkshire breeding stock questions and needs!



PA4 ALL YOU WANT 5-7

TRAIT	EPD	TRAIT	EPD	INDEX	EPD
NBA	0.17	Days 250	.48	SPI	103.5
21 Day wt.	-0.01	Backfat	-0.01	MLI	102.8
				TSI	98.5

No order too large or too small. Let our experience and our breeding stock help you develop your Berkshire herd and program.

Drs. B. C. and S. J. Smith, Owners
T. Johnson, Herdsman
Drs. M. P. and L. J. Hoffman, Consulting Partners

www.hoffmanberks.com Ben (515) 620-9540, Sarah (515) 468-7589
Email: hoffmanberks@gmail.com Pete (515) 450-1340, Lorraine (515) 450-1329

ARE YOU READY?

ABA NAPOLE POLICY CHANGES GO INTO EFFECT JAN. 1



The American Berkshire Association assumes no liability for any purchases that are made of Berkshire pigs that have unknown Stress or Napole status of any DNA status that is not permitted for registration. The American Berkshire Association makes no warranty regarding the stress gene, Napole or other DNA status not permitted for registration. Stuart & Branigin LLP

A Production Oriented Berkshire Program with Winning Results!

VOLUME OF BRED GILTS, OPEN GILTS, AND BOARS FOR SALE!
OVER 100 BRED GILTS AVAILABLE NOW. NATIONAL DELIVERY OPTIONS AVAILABLE.



BTC Special Effect 84-2
THE SIRE OF BTC SPECIAL TREATMENT AND SERVICE SIRE TO MANY OF THE BRED GILTS.



Champion Berkshire Bred Gilt at 2024 Summer Type Conference
WE ALSO HAD THE CHAMPION BRED GILT AT THE 2024 EXPOSITION



BTC Special Treatment

THE \$19,000 NATIONAL BARROW SHOW CHAMPION BERKSHIRE BOAR.
NOW STANDING AT PREMIUM BLEND GENETICS.

THE BTC FEMALES MAKE THE DIFFERENCE!!!



WITH 57 National Champions BRED HERE, THE WINNING RESULTS CONTINUE.



THIS IMPRESSIVE 75 LITTER SOW WOULD BE THE MOTHER OF SEVERAL OF THE BRED GILTS.



A FEW OTHER BREEDS AND CROSSBREDS AVAILABLE AS WELL.

Brice Conover - 515 979 3890 | Barney 1124@hotmail.com



Interested to see stress and Napole results? Check out the search portal!



GENE EXPLANATION

Napole RN	PRKAG3	Stress HAL 1843
Allele Combinations: GG, GA, AA	Allele Combinations: AA, GA, GG	Allele Combinations: CC, CT, TT
Desired Allele: GG (RN Free)	Desired Allele: AA	Desired Allele: CC (Stress Free)
Carrier Allele: GA	Carrier Allele: AG	Carrier Allele: CT

DNA IOI

written by Mallorie Boggs

A badge of pride for the Berkshire breed is the exceptional meat quality. The RN gene plays a crucial role in determining meat tenderness, juiciness, and processing characteristics, making it vital for breeders focused on producing high-quality pork. The Rendement Napole (RN) gene is a key component of DNA quality. Effective January 1, 2025, the American Berkshire Association is requiring that all sires used to register Berkshire litters must be DNA banked and tested for the stress (HAL-1843) and

Redement Napole (RN) genes. The sire's stress and Redement Napole results must be negative for litter registrations, however, if the status of the boar is a negative mating and the boar does not test negative, we will follow the Standard Procedures for DNA Testing and Report of Results. This is in a direct effort to protect the breed's integrity and expectations in production and on the plate of consumers.

Effects of Napole and Pork
The RN gene is associated with

regulating glycogen storage in muscle tissues. Pigs with the RN gene mutation have higher glycogen levels in their muscles, specifically at the time of slaughter. This excess glycogen increases acidification during the post-mortem phase, causing a drop in pH that affects the quality of the meat.

Maintaining an ideal pH range ensures pork has the right texture, flavor, juiciness, and overall quality. A low pH (less than 5.4) causes pork to be pale and watery, with poor water-holding capacity resulting in a less juicy, mushy

product. Berkshires with a negative RN gene have a pH in the normal range creating a more flavorful, tender, appealing product. Berkshires have a history of an ideal pH. In the past seven American Berkshire Progeny Tests the average pH was 5.74.

Keeping the purebred Berkshire breed negative for the RN gene ensures high standards for pork quality.

DNA Collection Methods

Tissue Sampling Unit (TSU):
TSUs have the lowest level of failing rates of all DNA testing methods making it the preferred method of DNA testing. Position the applicator on the ear and press to take a small tissue sample. The applicator will punch through the ear and deposit a tissue sample directly into the

TSU tube, minimizing the chance of contamination. TSU kits can be purchased at Neogen's website.

Blotter Cards:

This slightly invasive method is a reliable means to collect DNA. After disinfecting, prick the pig's ear to draw blood. With the blotter card, put a blood sample onto the card in the circular area. Breeders can purchase blotter cards and watch a step-by-step video for blotter card collection at americanberkshire.com.

Once DNA is collected, please send the specimen to the ABA's office. DNA will be sent out for testing every Friday.

Results are mailed out to breeders after they are received by the ABA's office.

Keeping the Confidence

This new testing requirement from the American Berkshire Association reinforces a commitment to the heritage and quality of Berkshire pork. By upholding rigorous standards and using modern DNA testing methods, breeders can confidently produce pork that meets the high expectations of consumers and maintains the integrity of the breed. As the ABA continues to prioritize genetic integrity and meat quality, Berkshire pork will remain a top choice for chefs, food enthusiasts, and families alike, offering unmatched flavor and tenderness on every plate. •

CELEBRATING 65 YEARS OF BREEDING BERKSHIRES IN 2025



"Thief", BACL3 Stacked Deck 14-8
Bred by Barrett Clark, Owned with Rattlesnake Mtn. Farm
SEMEN SALES, CONTACT MARK 814-574-3274



Productive females, Bred for quality and growth



"Billy", BRVO4 Bennett Rosette Count 1-12
Reg. 188877012, Bred by John Barnes, NC



Our commitment to the future, Farrowing barn / nursery

BRUMMER FAMILY BERKSHIRES

MILLERSTOWN, PA
ED & MEGS
PETE, HEATHER, ETHAN & ELLA
717-877-4000

FOUNDATION NEWS

SUPPORT THE YOUTH: SAVE THE DATE - DECEMBER 3, 2024

The American Berkshire Foundation is having another Memorabilia and Paraphernalia auction on Giving Tuesday. Check out all the items on Showpig.com. The bidding will start at 5:00pm EST on Tuesday, December 3rd. All proceeds will go towards scholarships that support our young breeders continuing their education.

SCHOLARSHIPS: DEADLINE - APRIL 1, 2025

Scholarship Applications are now open. Visit www.americanberkshire.com/foundation/ to apply online. Applicants will need two references which can be attached to your application or emailed to foundation@americanberkshire.com. References also need to be submitted by April 1st. Recipients will get recognized during open Berkshire show at The Exposition in Indianapolis.

BOARD OF DIRECTORS

A huge Thank You to Julene Shaffner for her many years of service on the Foundation's Board. She has dedicated many hours to the breed and has supported our youth as a Board of Director. Her wisdom and advice will greatly be missed; and we can't thank her enough for her service.

The purpose of the Foundation is to encourage interest in the American Berkshire swine breed by administering programs for the purpose of educating, promoting and growing youth involvement within the breed.

If you are interested in serving as a Board of Directors for the Foundation, reach out to any of us. Contact information can be found on the foundation page of the ABA's website.



BOARD OF DIRECTORS
 Brett Wright, KY - *President*
 Matt Ritter, IN - *Vice President*
 Kim Neumann, MN - *Secretary/Treasurer*
 Dr. Kim Mudroch
 Karla Smith
 Al Conover
 Lane Bennett
 Julene Shaffner
 Dr. Charles Martin
 Priscilla England

Contact the Foundation by emailing foundation@americanberkshire.com



Scan to donate
directly online!



2025 Membership Renewal



AMERICAN
BERKSHIRE
— ASSOCIATION —

Please complete the following if you want to be listed across all platforms of the breeder's directory for the American Berkshire Association. If you do not fill out this form, your information will not be listed.

Please return all correspondence by January 3, 2025

Save time and postage by completing the form online at www.americanberkshire.com

*Indicates required field

Name/Farm Name*: _____

Breeder Number/Herd Mark*: _____

Address*: _____

City*: _____ State*: _____ Zip*: _____

Primary Phone*: _____ Secondary Phone: _____

E-mail Address (If applicable): _____

Website Address (If applicable): _____

Facebook Site (If applicable): _____

Number of years raising Berkshires? _____

1. Check a box for number of registered Berkshire gilts/sows you own*

Less than 10 Less than 25 Less than 50 Less than 75 Less than 100 100+

2. How do you market your pigs? *

(Circle all that apply)

Off the farm

Direct to Consumer Through
a feeder pig market

Through a marketing coop/group

Media (social media, newspapers, magazines)

Online sales

Live Sales and Type Conferences

For the 2025 calendar year:

Please add my information to the Breeders Directory listing (\$25.00)\$ _____
(Includes all platforms, online or printed, forms must be submitted by January 3 to be in any printed publications).

Please renew my American Berkshire Senior Membership (\$75.00)\$ _____

Lifetime Membership (\$1,500.00)\$ _____

Total Enclosed: \$ _____

Payment can be made by check or credit card

Payments must be made payable to: American Berkshire Association

Card Number: _____ Expiration Date: _____

Security Code: _____ Billing Zip: _____

Return to:

American Berkshire Association,

2637 Yeager Road, West Lafayette, IN 47906

Or email the form to Office@americanberkshire.com



KENT BERKSHIRE RESEARCH STUDY

- ✓ *First-of-its-kind research project*
- ✓ *Berkshire pig wean to harvest study*
- ✓ *Nearly \$15 more per pig live price**



Scan to learn more
or visit kentfeeds.com

*Based on statistically significant swine feeding trials conducted at the Kent Research Farm in 2023. © 2024 Kent Nutrition Group, Inc. All rights reserved.

THE POWER OF PRODUCTIVE SOWS

Setting the Standard for Fertility and Performance



REG. 175134001

TSS2 HUSTLE BELLE 2-1

TSS9 VEGANS REVENGE 23-3
x FKB8 LANCELOT 50-4

4 LITTERS

42 BORN / 40 LIVE



REG. 175137006

TSS2 JOAN 5-6

TSS7 BIG TEX 5-7
x TSS5 HOLLYWOOD 13-3

4 LITTERS

47 BORN / 46 LIVE



The Joan and Hustle Belle lines have help produce Seybold Berkshires 5 American Berkshire Progeny Test WINNING sires for performance and 4 Progeny Test WINNING sires for meat quality.

On my farm, I only use natural mating and the numbers demonstrate the consistent fertility and productivity of my Berkshire sows, resulting in healthier litters and optimal growth performance.

Theses two sows will be a staple of my herd for years to come, as well as be influencers in the Berkshire breed.

SEYBOLD BERKSHIRES

Troy Seybold • Wilcox, NE
(308) 627-3362