

THE BERKSHIRE NEWS

The Official Newsletter of the ABA



AMERICAN
BERKSHIRE
— ASSOCIATION —

WE ARE VERY EXCITED TO PRESENT

“Old School”



**HBF9 ALL YOU WANT 6-2 (NAME CHANGE PENDING)
REG # 159648002**

“Old School” **PROVIDES:**

- NATURAL ANGLES TO BREED SOWS NATURALLY
- ABILITY TO PRODUCE FEMALES THAT FARROW UNASSISTED
- AN EXTENDED PEDIGREE WITH SOME OF THE FINEST, OLD SCHOOL HERDMARKS IN THE ABA!!

THE LIST OF INQUIRES FOR HIS OFFSPRING IS GROWING!

Brummer Family Berkshires
SINCE 1960

ED + MEG
PORT ROYAL, PA

PETE, HEATHER, ETHAN, ELLA
MILLERSTOWN, PA
717-877-4000

A Message from the Board of Directors:

Pete Brummer, President



Greetings Berkshire enthusiasts,

I hope you are all off to a successful and happy New Year! As we are in working through the first few months of what we feel will be an exciting 2022, let's take a look back at 2021. I feel that it's important to always reflect on the past to evaluate our accomplishments, admit our mistakes, and never forget the Berkshire breeders that have come before us. Here are some of our accomplishments:

- 1) Having a very unified and proactive Board of Directors.
- 2) Ending 2021 on a very strong financial foundation.
- 3) Being very open and transparent about the ABA's collaboration with NSR/NJSA
- 4) Registered Berkshire Pork Program (RBP).
- 5) 2021 Progeny Test completed.
- 6) Family support to those that have lost loved ones or have struggled through health issues.

BOARD OF DIRECTORS

Pete Brummer, *President*
Matt Ritter, *Vice President*
Lance Knobloch, *Exec. Committee*
John Barnes
Brice Conover
Jim Petrik
Ben Schmalting
Greg Smith
Jeff Smith

ABA STAFF

Cory Edge
Director of Berkshire Operations
cory@americanberkshire.com

Rose Criswell
Membership Services Coordinator
rose@americanberkshire.com

American Berkshire Association
2637 Yeager Rd.
West Lafayette, IN 47906
(765) 497-3618
office@americanberkshire.com
americanberkshire.com

Then, here are a few items the Board of Directors are excited about in 2022:

There is great excitement and anticipation about the new opportunities through the collaboration with NSR, NJSA and Seedstock EDGE

We have had several conversations with folks about rolling out the "RBP" program which is set to launch before the end of Q1.

The 2022 Progeny Test will be held at a first-class facility in Pennsylvania, and we look forward to collaborating with Dr. Beth Hines of Penn State University. The Board of Directors has voted unanimously to follow up with Dr. Juan Steibel, Michigan State University, to begin the process of DNA breed composition verification to help preserve from this point forward, the purity of the Berkshire breed.

We are excited to have Mr. John Barnes of North Carolina joining the Board of Directors filling the seat left vacant by the untimely passing of Rich McCasland. The ABA also continues forward in 2022 with a very professional and first-class staff. Executive Director, Mr. Cory Edge, is proving to be a great hire and we look forward to great things in the year ahead. Ms. Rose Criswell continues to do a great job taking care of the office and membership needs and is a major asset of the ABA. Having great staff makes the job of being President a really enjoyable position. Thank you to our wonderful team!!!

As I conclude, I would like to take this time to thank my dad, Ed. I'm glad he instilled in me the love of agriculture and especially of a little black pig with 6 white points, erect ears, and a white blaze on its face. As we head into 2022, let us all strive to breed, select, sell, and drive that perfectly marked Berkshire boar, gilt, or barrow.

Sincerely,

Pete Brummer
(717) 877-4000

ABA Partners with Seedstock EDGE

On January 1, 2022, the American Berkshire Association became a full investor and partner in the Seedstock EDGE Magazine. The Berkshire breed will now be featured in the purebred swine industry's premiere publication, now distributed quarterly. ABA stakeholders and membership can expect the following content on behalf of the association: show reports, association news, editorial and advertisement as deemed necessary by the ABA. Berkshire junior show champions will be included in all junior show reports as part of the partnership with NJSA.

There are many new advertising options available that will put you in front of a vast audience with the highest quality resources available to assist you with your marketing efforts! Additional information regarding advertising rates, contracts, and other opportunities with Seedstock EDGE can be provided by contacting cory@americanberkshire.com.

John Barnes to Join the ABA Board of Directors

With the sudden passing of our friend and fellow board member, Rich McCasland, the ABA board took filling Rich's seat very seriously and welcomed John Barnes to the ABA Board of Directors in December of 2021.

John was raised in Wilson County, NC. He grew up showing many species of livestock in 4-H, including cattle, hogs, lambs, goats, and turkeys. John competed in livestock judging competitions in 4-H, which sparked his interest in livestock evaluation. He was especially interested in beef cattle. In pursuit of his dreams, John went to college in Kansas at Butler community college and Kansas State University, competing on their collegiate livestock judging teams while earning undergraduate degrees. John was a member of the Reserve National Championship Livestock Judging team at Kansas State. In line with his entrepreneurial spirit, he completed post-graduate studies and earned an MBA.

His entire adult life has been spent raising purebred and commercial cattle and for the last several years, purebred Berkshire hogs. He has managed purebred cattle farms, worked in the corporate office for a beef packing company, and has worked for an international company that specializes in breeding cattle. Today, John and his family own and operate Bravo Steaks specializing in high quality beef and Berkshire pork production and sales. He brings real-world production, marketing, and a true passion for the Berkshire breed to the ABA Board of Directors.



AMERICAN BERKSHIRE ASSOCIATION PEDIGREE F.A.Q.

HOW DO I GET SET UP TO REGISTER LITTERS ONLINE?

One of the best and most efficient ways to complete a litter registration is online. To register online, you first, must make sure you are on the American Berkshire website. To complete an online litter registration, you will need your breeder number, herdmark, and username, and password to log in. If you do not know your log-in information, contact the ABA office and we can give you the information.

WHAT CAUSES ONLINE LITTERS TO NOT BE REGISTERED?

The most common issue for online litters not being registered is the dam is not in the breeder's number. This happens when leased animals are not returned to the breeder's number. Another common issue is that numbers are mistyped. Please make sure to check overall registration numbers and ear notches. All registration numbers will have 9 numbers and registration numbers must match the ear notch.

HOW MUCH DOES IT COST TO REGISTER A LITTER?

To register a liter, as an ABA member, the price bracket is \$18 for litters under 90 days and \$36 for litters over 90 days. The 90 days are determined from the date your litter was farrowed.

WHAT IS THE COST OF A TRANSFER?

The cost of a transfer is \$5 within 60 days of the sale of the pig, and increases to \$10 if the transfer is done 60 days after the sale of the pig.

I USED A HERD BOAR AS MY LITTER'S SIRE, IS THERE ANYTHING I NEED TO DO?

All sires must have their DNA stress tested and banked. If you are unsure if a boar's DNA has been tested, the ABA can check it. If you need to get the boar tested, the office has DNA blotter cards available for purchase, at \$5 a card that is for the collection of blood or semen. Once the DNA sample is collected, you can send it to the ABA office, and we will send the DNA into the lab for the stress test that costs \$25.

WHAT IS THE BEST WAY TO SUBMIT A TRANSFER REQUEST TO THE OFFICE?

The easiest way to complete a transfer, if you have not tried it by now, is the online transfer. On the online form, options are availed if you are needing an email copy of your pedigree or there is a special request box. After you submit your online transfer, you will receive an email back once your transfers are completed. Pedigrees are mailed directly to the new owners unless stated otherwise.

I HAVE NOT RECEIVED MY PEDIGREES, WHAT IS GOING ON?

If your pedigrees are taking longer than expected to receive, please contact the office. A possibility is that your A.I. Certificate was not received, we need DNA, or your online litters were not registered, due to an error.

For a step-by-step video explanation of how to register a litter or to collect DNA, visit americanberkshire.com.



QUESTIONS?

(765) 497-3618 | OFFICE@AMERICANBERKSHIRE.COM | AMERICANBERKSHIRE.COM

THROUGH THE SAUSAGE MILL

by James T. Colby of Shelbyville, Ky.

The quickest way to a man's heart is through his stomach. A good way to put Berkshires into public favor is through the sausage mill and smoke house. We of the inner circle know already that the Berkshire is the best and most profitable all around hog breed. The general public must be educated to the fact. This education can be partially accomplished in time by the barrow and carcass contests, shop talk, and consistent advertising. In the end it will only reach a limited number of people. Just as sure as a pure pork sausage is superior in taste to any other kind, just so Berkshire sausage will put it over sausage made from any other kind of hogs. Why? Just because the edible meat in Berkshires is of finer texture, quality, and flavor than that of any other hog. It not why has Berkshire won thirteen out of twenty carcass contests in England in the last twenty years and about the same at the Chicago International? As the popular tobacco advertisement has it "TASTE TELLS." When we who are most interested in Berkshires create a demand for our products, the packers will begin to pay a premium price for Berkshires on the hoof. They can well afford to.

Not only will the sausage industry bring Berkshires before the public quickly, but it will also make more for the breeder quicker than any other way. Elaborate equipment is not necessary. Many breeders can cull closely and make a handsome profit out of the culls by putting them through the mill. Business may be dull, but there never is a time when people do not have to eat, and at this season nothing is in demand more than pork sausage. The farm work is slack and the men can devote their time to making sausage without neglecting other duties.

"Country sausage" is advertised by every market in the late fall, and people rush to buy it, because they believe it is made on the farm, and is therefore better. Why does this influence them? Because nearly every one of them can remember the old days on the farm., when "hog-killing" time arrived, with its excitement and work, which soon resulted and lots of good eating. The title "country sausage" savors not only the sage and pepper, but all of the plenty of the good old days. Now, with care in the preparation, grading as to fat content, seasoning and grinding. "Berkshire" sausage will far excel the ordinary country sausage that it will sell and repeatedly sell.

You have the hog that will give you "much better than the average quality of meat," just maintain that same quality in sausage, and let the public know you have it, and see how soon your business will build up along this line. We all have friends and relatives in towns and cities who never get a chance to taste real pure pork sausage. Perhaps some of them cannot eat the concoction of cereal, grease and meat mixtures, highly seasoned to camouflage its original taste. There is much of this hoisted off the ways of the provision concerns, labeled "sausage". Berkshire sausage has no horrors for the delicate digestion, unless it tempts one to eat beyond reason, owing to its "morish" taste.

There is nothing like an attractive trade mark to influence the sale of products. People who notice advertisements of various articles in popular magazines will insist on "Colgate's This" or "Heinz That," because some prominent item in the ad has caught their eye and held in their mind. A Berkshire breeder about to start making sausage and pork products, should be just as sure to adopt a catchy trade-mark as a man in any other business. Use this trade-mark on shipping tags, boxes, containers, etc. The following is an example of what I mean;



It can be called "Little Pig" sausage, "Pedigreed Pork" sausage, "Country Maid" sausage, "Real Sausage," "Quality Sausage," or any fitting name. Then contend and maintain that it is the BEST. Maintain quality and present the product to the public in the right manner and the fellow behind the mill cannot fail to count his success in good hard cash.

INTRODUCING...

A3C ROSETTE COUNT 1-1

FEATURES:

- **BRED BY AL CHRISTIAN**
- **SIRED BY A3C9 ROSETTE COUNT 12-1**
WHO'S CURRENTLY OWNED BY A3C & PCC BERKS & SGI

HIS LITTERS ARE SOME OF THE MOST UNIFORM TO DATE AT OAK HILL BERKSHIRES!

YOUR SOUTHEASTERN SOURCE FOR REGISTERED BERKSHIRE GENETICS

**BREEDING STOCK
PASTURE FINISHED
BERKSHIRE PORK
FEEDER PIGS**

ABA REG. # 166876001



WE WILL HAVE BOARS AND GILTS AVAILABLE OUT OF ROSETTE COUNT 1-1 IN LATE WINTER EARLY SPRING 2022.



LANE BENNETT | CALHOUN, GA | 770-881-6138

CORT KNOBLOCH ANNOUNCES OUR 2021 REGISTERED BERKSHIRE PORK ABA PROGENY TEST RESULTS:



**7-25-2021
KEEGAN & CALLIE'S SON**



**MFC9
JETBLACK 209-8**

PRIME PORK INDEX SIRE

- #1 IMF %**
- #3 INSTRON TENDERNESS**
- #3 SENSORY TENDERNESS**



**FKB9 "TANGO"
ECHO X-RAY 62-11**

PERFORMANCE INDEX SIRE

- #2 LEA**
- #2 BF10**
- #4 SENSORY JUICINESS**
- #4 SENSORY
TENDERNESS**

FKB9 BELT LOADER 77-1

**#2 ULTIMATE PH
#2 BF10
#3 MINOLTA Y
#3 MINOLTA L
#4 SOUNDNESS**



COP7 DIRTY MONKEY 14-8

**#1 LEA
#3 IMF %**

**FKB TESTS 100% OF ALL
HERD SIRES TO INSURE
YOU, OUR PARTNER...**

**THE MOST PROVEN,
PREDICTABLE, AND
TRUSTED MEAT QUALITY
GENETICS IN THE USA!**



**LANCE AND KRISTI
KNOBLOCH & FAMILY**

**ALVORD, IOWA
605-366-4385
FLYNKBERKS.COM**

Petrik Farms

GAYVILLE, SD

The boars are sold,
but large groups of the same
caliber of boars and gilts
available all the time.

High Quality,
High Health,
Great Selection.



These boars went to good
breeders but big groups of
similar quality are a
phone call away.

JIM PETRIK AND FAMILY

605-661-7179 | petrikfarms@vastbb.net

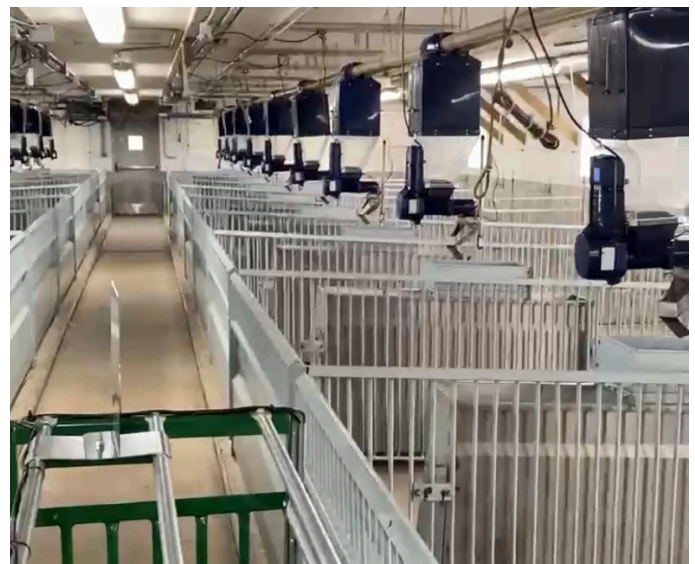
"Like" us on Facebook!

American Berkshire Association Progeny Test

The American Berkshire Association's Progeny Test remains the most extensive unbiased evaluation of progeny performance available to Berkshire breeders. Currently, twelve measures of progeny performance are recorded on every pig that completes the testing period. These include evaluations of carcass composition, growth performance, meat quality and eating quality. These data are compiled and returned to participating breeders for use within their individual breeding or marketing program. In general, the production goals employed by purebred breeders who utilize the Progeny Test can be characterized as either: mainstream pork production aimed at efficient production of lean product; or production aimed at enhanced eating quality.

The ABA is excited to announce the 2022 Progeny Test will be hosted at the Samuel E. Hayes Jr., Livestock Evaluation Center (LEC) located in central Pennsylvania. This state-of-the-art facility is a livestock testing station with shared direction from the PA Department of Agriculture, Penn State University, and respective species and breed associations. The focus of the LEC is to conduct standard, unbiased feeding and management tests, on either individuals or sire groups, within the four major species of meat animals (beef, swine, sheep, and meat goats) to measure genetic differences. With this new partnership, the ABA along with Penn State University Faculty and Students, look forward to a successful Progeny Test of the upmost quality. The opportunity to participate in the ABA Progeny Test has never been greater!

Additional information including the 2022 Progeny Test rules and regulations, entry form, delivery date, and more will be available at americanberkshire.com. If you have any questions regarding the ABA Progeny Test please contact ABA Executive Director, Cory Edge, at cory@americanberkshire.com or a member of the ABA Executive Committee.



2021 ABA Progeny Test Results

100% BERKSHIRE PERFORMANCE SIRE¹ INDEX

Awards are listed in **BOLD**.

100% Berkshire Performance Sire Index represents 90% weight
on Lean Growth measures and 10% weight on Eating Quality measures.

BREEDER	SIRE	ADG	BF10	LEA	SOUNDNESS	PRIME PORK INDEX	PERFORMANCE INDEX
Seybold Berks	TSS9 Vegan's Revenge 23-3	1.49	0.93	7.27	5.00	105.2	105.6
Fly'n K Berkshires	FKB9 "Tango" Echo X-Ray 62-11	1.59	0.93	7.70	5.86	99.5	103.1
Dallas Kuper	D&D9 Nutbush 1-5	1.62	1.14	7.36	5.38	101.8	101.6
John Barnes	FKB9 B787 Dreamliner 12-6	1.68	1.17	7.50	7.25	100.2	101.5
AJC Berkshires	AJC8 Diamond Lad 5-4	1.61	0.93	7.03	7.00	98.5	100.2
Fly'n K Berkshires	COP7 Dirty Monkey 14-8	1.57	0.98	7.96	6.50	97.6	100.1
AJC Berkshires	AJC8 Warhorse 7-3	1.58	0.90	7.10	5.57	98.3	99.8
AJC Berkshires	AJC8 Warhorse 7-2	1.66	1.01	7.65	8.00	96.1	99.6
Fly'n K Berkshires	MFC9 Jetblack 209-8	1.54	1.12	6.88	5.88	104.3	99.1
Ekippe Berkshires	MAP7 Old School 9-4	1.63	1.35	5.99	5.88	105.4	97.4
Fly'n K Berkshires	FKB9 Belt Loader 77-1	1.50	0.93	7.18	7.13	98.3	96.7
Fly'n K Berkshires	FKB0 Tug 94-5	1.60	1.25	6.70	7.25	98.1	92.1
2021 Berkshire Test Averages		1.59	1.04	7.28	6.45	100.0	100.0

¹ FKB7 B787 Dreamliner 53-5 was tested by Chad Kremper. This pen was eligible at entry, but did not have 6 qualifying pigs at the end of the test.

DATA FOR NON-QUALIFYING SIRE PENS¹

BREEDER	SIRE	ADG	LEA	SOUNDNESS	ULTIMATE PH	MINOLTA Y	MINOLTA L	IMF, %	INSTRON TENDERNESS	COOKING LOSS	SENSORY JUICINESS	SENSORY TENDERNESS
Chad Kremper	FKB7 B787 Dreamliner 53-5	1.63	0.84	8.63	7.40	5.67	46.18	2.21	5.09	22.59	6.73	6.33
2021 Berkshire Test Averages		1.59	1.04	7.28	5.80	5.69	45.84	2.66	4.78	20.82	6.73	6.78

¹ FKB7 B787 Dreamliner 53-5 was tested by Chad Kremper. This pen was eligible at entry, but did not have 6 qualifying pigs at the end of the test.

100% BERKSHIRE PRIME¹ PORK INDEX

Awards are listed in **BOLD**.

100% Berkshire Prime Pork Index represents 10% weight on Lean Growth measures and 90% weight on Eating Quality measures.

BREEDER	SIRE	ULTIMATE PH	MINOLTA Y	MINOLTA L	IMF, %	INSTRON TENDERNESS	COOKING LOSS	SENSORY JUICINESS	SENSORY TENDERNESS	PERFORMANCE INDEX	PRIME PORK INDEX
Tekippe Berkshires	MAP7 Old School 9-4	5.75	15.17	45.71	3.41	4.17	19.49	7.19	8.02	97.4	105.4
Seybold Berks	TSS9 Vegan's Revenge 23-3	5.79	13.80	43.77	2.74	4.15	17.96	7.14	7.48	105.6	105.2
Fly'n K Berkshires	MFC9 Jetblack 209-8	5.67	15.68	46.46	3.69	4.21	20.85	6.86	7.39	99.1	104.3
Dallas Kuper	D&D9 Nutbush 1-5	5.74	14.96	45.39	2.96	4.51	20.77	6.52	6.71	101.6	101.8
John Barnes	FKB9 B787 Dreamliner 12-6	5.66	14.68	45.06	2.39	4.63	20.89	6.46	7.04	101.5	100.2
Fly'n K Berkshires	FKB9 "Tango" Echo X-Ray 62-11	5.60	15.23	45.83	2.60	4.88	20.89	7.07	7.17	103.1	99.5
AJC Berkshires	AJC8 Diamond Lad 5-4	5.68	13.61	43.55	2.13	4.94	21.22	6.40	6.48	100.2	98.5
Fly'n K Berkshires	FKB9 Belt Loader 77-1	5.77	14.61	44.96	1.96	4.98	21.03	6.33	6.37	96.7	98.3
AJC Berkshires	AJC8 Warhorse 7-3	5.59	15.06	45.63	2.74	5.13	20.36	7.17	6.69	99.8	98.3
Fly'n K Berkshires	FKB0 Tug 94-5	5.67	15.86	46.67	2.40	4.86	22.07	6.27	6.38	92.1	98.1
Fly'n K Berkshires	COP7 Dirty Monkey 14-8	5.66	17.35	48.73	2.99	5.17	21.17	6.63	6.11	100.1	97.6
AJC Berkshires	AJC8 Warhorse 7-2	5.72	16.75	47.89	2.44	5.44	21.98	6.93	6.17	99.6	96.1
2021 Berkshire Test Averages		5.69	15.25	45.84	2.66	4.78	20.82	6.73	6.78	100.0	100.0

¹ FKB7 B787 Dreamliner 53-5 was tested by Chad Krempner. This pen was eligible at entry, but did not have 6 qualifying pigs at the end of the test.

THANK YOU TO THE PROGENY TEST SPONSORS:



AMERICAN
BERKSHIRE
— ASSOCIATION —
SINCE 1875



2022 SHOW SCHEDULE



JAN. 18 - 22
PERRY, GA



MARCH 3-6
AUSTIN, TX



MARCH 21
LEBANON, IN



DATE TBA
INDIANAPOLIS, IN



JUNE 12-18
DES MOINES, IA



JULY 3-9
LOUISVILLE, KY



DATE TBA
AUSTIN, MN



DATE TBA
DUNCAN, OK

As a reminder,
the ABA will be
teaming up with
the National Swine
Registry for shows
beginning in 2022.
This includes
NJSa events.



The Foundation was incorporated on May 7th, 1998, making it the only purebred swine breed foundation in existence. The mission of the American Berkshire Foundation is to preserve the past, strengthen the present and ensure the future by supporting the educational and career goals of our youth with scholarship and mentoring. With the generous donations we can fund scholarships and other programs for many outstanding young Berkshire breeders. Thank you to those that have donated in the past and if you are interested in investing in our youth, please use this donation form to do so.

Name: _____

Address: _____

- ☐ **Become a Cornerstone Donor** – program allows you to strengthen the Foundation and support the future of Berkshires and animal agriculture. We have two options to donate.

____ Pledge \$100 for 10 years (an invoice will get sent each year)

____ One-time payment of \$1000

- ☐ **General Donation** – Every dollar will help support young breeders continue their education.

In Memory of: _____

We would like to send a card to the family which the donation was made for.

If you would also like us to send a card, please provide an address.

- ☐ **State Basket Auction** – held during the American Berkshire Association national shows every year.

____ I would like to contribute a basket (contact any of the Foundation's board members to coordinate a basket for any of the American Berkshire open shows)

____ I would like to purchase a state basket/memorabilia (check out the Foundation's facebook page prior to the shows. If you want to make a bid contact Kim Neumann at 320-220-3626)

- ☐ **Endowment/Will** - Please contact Kim Neumann if you would like to set something up

- ☐ **1% Voluntary Donation** – check the box on your entry form for any American Berkshire Association Open Show Event/Type Conference.

- ☐ **Shop Amazon Smile under American Berkshire Foundation Inc. (smile.amazon.com)**

Send this form and payment to:

Kim Neumann at 29175 230th St, Wabasso, MN 56293

Please make checks payable to American Berkshire Foundation

Thank you for your support in our youth's future!



**AMERICAN
BERKSHIRE**
— ASSOCIATION —
SINCE 1875

2637 Yeager Rd. | West Lafayette, IN 47906
office@americanberkshire.com | (765) 497-3618

BREEDER DIRECTORY

The American Berkshire Association is proud fueled by members from all over the country. From loyal meat quality herds, to show-focused operations Berkshire producers are what makes the ABA the world's oldest swine registry. Connect with a member below!



: Notes show pig genetics



: Notes meat quality genetics

ALABAMA

Golf Coast Genetics • RGCG
Robin Clark
12134 Yancey Glen Dr.
Mobile, AL, 36695
251-605-3073
rgclark1959@yahoo.com



ARKANSAS

Cory Davis • HCW
209 Lealon Ln.
Bald Knob, AR, 72010
501-283-4056



Parish Ranch • SSPR
Sam & Stephanie Parish
13915 Hwy. 28 W
Rover, AR, 72860
479-393-1175
stephanie.parish19@gmail.com



CALIFORNIA

Best Value Berkshires • BVB
3230 Hill Rd. E
Lakeport, CA, 95453
707-530-6898



Cy A Hawkins • CYAH
PO Box 1326
Williams, CA, 95987
530-701-8298 • 530-473-2264
cyhawkinsagency@gmail.com
cyhawkinsshowpigs.com



Donald R Naves Jr. & Family • NAF
3922 Sycamore Ln.
Pleasant Grove, CA, 95668
916-799-5259 • 916-502-7502
navesandfamily@gmail.com



COLORADO

Warren Crowther • WCHR
PO Box 161, 445 Ivy St.
Sanford, CO, 81151
719-588-2034
w_crowther@hotmail.com



Zimmerman Pork Farm • ZPF

Rick Zimmerman
10391 3250 Rd.
Hotchkiss, CO, 81419
970-270-4066 • 970-872-3163
zimmermanpork@tds.net



CONNECTICUT

Secchiaroli Farm • SEC1
62 Miner Ln.
Waterford, CT, 6385
860-922-7608
jonathan@secchiarolifarm.com
secchiarolifarm.com



DELAWARE

Burnite Mille Farm • BMI
8135 Burnite Mill Rd.
Felton, DE, 19943
302-284-0705



FLORIDA

Antata Farms at Four Arrows Ranch • AFCC
Clare & Mark Kansley
4135 E Hwy 318
Citra, FL, 32113
954-736-9249
clarekansley@yahoo.com



Little Bacon Farms • BEMB
Josh & Marianne Bemby
2610 SE 46th Way
Trenton, FL, 32693
386-243-1272
marianne.bembry@gmail.com



Prestigious Piggies • GKCM
Gary Klos
1140 NE 342nd Trl.
Okeechobee, FL, 34972
832-642-0777
garywklossr@gmail.com



GEORGIA

Christopher Thompson • BCBF
3373 Jeff Davis Rd.
Thomaston, GA, 30286
762-208-0539
christopherthompson403@gmail.com



Cluck & Holler Farm, LLC • C&HF
Jerry & Michelle Williams

898 Dock Lathem Trail
Ball Ground, GA, 30107
770-324-4043
cluckandholler@gmail.com
cluckandholler.com



Fallen Feather Farm • FFGA
Cameron and Makenzie Cox
80 Smokey Ford Rd.
Dalton, GA, 30721
706-581-1471
fallenfeatherfarmllc@gmail.com



Lane Bennett • OHK
629 Love Bridge Rd. SE
Calhoun, GA, 30701
lrbennett83@gmail.com



ILLINOIS

Armstrong Kids • TMLA
12495 Shiloh Church Rd.
Huntsville, IA, 62344
217-440-7768
armstronggenetics@gmail.com
armstronggenetics.com



ASI Showpigs • ASI
18043 E 2125th Rd.
Chrisman, IL, 61924
217-822-3281
mdaingram@gmail.com
asishowpigs.com



Big Creek Berkshires • JBCB
21188 N 1620th St.
Marshall, IL, 62441
217-264-1556
bigcreeklivestock@gmail.com



Dale & Ben Rabe • DARB
15270 IL Rt. 76
Polar Grove, IA, 61065
815-871-4555
rasonpigs@aol.com



Drew & Martin Voorhees • DMV
1123 E Cruger Rd.
Washington, IL, 61571
319-224-8925



John, Gary, Kevin Hay • GKH

8838 N Quarry Hill Rd.
Warren, IL, 61087
608-330-1136
kevinhay56@yahoo.com
jnhhay81@yahoo.com

**Kraig & Monique Weinberg • KRMW**

15910 Sportsmen Rd.
Trenton, IL, 62293
312-560-5943
kraig.weinberg@merck.com

**Leroy Rahn • LDRB**

734 N County Rd. 1725 E
Comargo, IL, 61919
217-621-0702
creeksideberks@yahoo.com

**Michael Pilcher • MEP**

538 N 1300 East Rd.
Paxton, IL, 60957
217-377-8822

**Nahunta Farms • NAHF**

189 Nahunta Farm Rd.
Pikeville, IL, 27863
919-922-5152

**Smith Farms • SFP**

Andy Smith
11602 W Legion Hall Rd.
Princeville, IA, 61559
309-385-2553
smittys98@gmail.com

**Tuthill Family Farms • TUT**

9768 Grain Bin Rd.
Wyoming, IL, 61491
309-238-4603
randytuthill@gmail.com
tuthillfamilyfarms.com



INDIANA

Ali Herbel & Carl Ferrand • ALIT

2629 N CR 50 E
Greencastle, IN, 46135
765-720-5779
carlferrand@yahoo.com

**Jack Rodibaugh & Sons • JRS**

3053 W 725 S
Rensselaer, IN, 47978
219-863-8647 • 765-427-0683
david@rodibaugh.com
steve@rodibaugh.com
rodibaugh.com

**Logan & Lauren Thomas • LOG**

4654 N County Rd. 200 W
Brazil, IN, 47834
812-249-1868
alanreed99@gmail.com

**Mark Flora • MEF**

829E 50 N
Flora, IN, 46929
574-967-3484
mefflora@embarqmail.com

**Merrill & Linda Smith • MLS**

1927 S US Hwy 421
Greensburg, IN, 47240
812-525-1769
merrillsmith1@gmail.com

**Nathan Arnholt & Family • NRA**

11678 E State Rd. 46
Columbus, IN, 47203
812-371-2689
narnholt@comcast.net



IOWA

AJC Berkshires • AJC

Al & Adam Conover
Box 9
Baxter, IA, 50028
515-491-8078
aj@conoverauction.com
ajcberkshires.com

**AJC Berkshires • AJC**

Al & Adam Conover
Box 9
Baxter, IA, 50028
515-491-8078
aj@conoverauction.com
ajcberkshires.com/bonnie-acres-farm

**A3 Company • AC3**

Al Conover
1002 Arizona Ave.
Ames, IA, 50014
515-460-4352
conoverju@gmail.com

**Cottonwood Farm • CW
Jaxon Sievers, Clark, Jean Conover &
Cody Conover**

5361 190th St.
Holstein, IA, 51025
712-368-2209

**Eggers Showpigs • ESSP**

1663 235th St.
State Center, IA, 50247
515-231-1720
joereggers@hotmail.com
eggersshowpigs.com

**Eli Slouha • CGF**

3903 Cherry Grove Rd.
Martelle, IA, 52305
319-423-1293
eli_slouha9020@hotmail.com

**England's Berkshires • EB**

1875 Yellowstone Ave.
Clearfield, IA, 50840
641-336-2925 • 641-344-2472
englberk@iowatelecom.net

**Five Star Genetics • REM**

Ryan Morningstar
2896 Half Moon Ave. NW
Tiffin, IA, 52340
765-576-0034
arim@designsbyarin.com

**Fly'n K Berkshires • FKB**

2104 190th St.
Alvord, IA, 51230
605-366-4305
kance@alliancecom.net
flynkberks.com

**Grant Ridge Farms • GRFF
Gene & Renee Grant**

45307 17th St.
Preston, IA, 52069
563-212-0562 • 563-249-0223
genren2017@netins.net

**Justin Brown • WADZ**

412 4th St.
Manning, CA, 51455
515-249-1957

**Lane Show Pigs • AUST
Austin & Ken Lane**

39415 82nd St.
Spragueville, IA, 52074
563-212-1999 • 563-212-5697
aulane2113@gmail.com

**Marland Farms • MFC**

10236 K Ave.
Fayette, IA, 52142
563-637-2703 • 563-380-2279

**Ray Tekippe • RTK**

1528 270th Ave.
Earlville, IA, 52041
563-543-4267
raytekippe@gmail.com
usedswineequipment.com

**Shady Brook Farm • SBF
Chris Conover & Family**

719 Schueman Ct.
Oakland, IA, 51560
712-378-7548
cconover12@yahoo.com

**TL Maxwell Farms • TLMF**

1444 N Isett Ave.
Moscow, IA, 52760
563-506-4291
maxwellfarms@gmail.com

**Woods Show Pigs • CTBW**

4147 Campfire Rd.
Walker, IA, 52352
319-361-3299



Ritter Family Berkshires • 2REV
Matt, Megan, Jackson, Cole & Brynn Ritter
697 W. 950 N.
Fortville, IN, 46040
317-331-2854
mattandmeganritter@gmail.com
ritterberkshires.com


Shaffers Goldrush • GRUS
12417 W 875 N
Albany, IN, 47320
765-789-8349
shaffer@shaffergoldrush.com
shaffergoldrush.com


KANSAS

Gene Waters • WAT
26730 New Lawrence Dr.
Leavenworth, KS, 66048
913-250-0660 • 913-683-3318
ericrobby@gmail.com


KENTUCKY

Eric Robb • ETBR
6545 Lebanon Rd.
Danville, KY, 40422
859-325-3999
ericrobby@gmail.com


Redbud Vallet Farm/RBV Berkshires • RBVF
Dylan & Lori Gilbert
1643 Bonds Pk.
Stamping Ground, KY, 40379
859-321-6370
redbudvalleyfarm@gmail.com


MARYLAND

Cherry Bell Farms • CBF
Sherry & Charles Laster
1524 Sullivan Rd.
Westminster, MD, 21157
443-824-3560
lasterc69@yahoo.com


Deer Meadow Farm • DMFM
1725 Tower Rd.
Aberdeen, MD, 21001
443-807-2049 • 443-807-0044
info@dmfarmsales.com
dmfarmsales.com


MICHIGAN

Albright Swine Farm • ASF
965 Flint Rd.
Coldwater, MI, 49036
517-238-5817
pat@albrightswine.com
brightswine.com


Ernie Birchmeier • BIRC
5200 N Durand Rd.
Corunna, MI, 48817
517-420-2231


MINNESOTA

Johnson Berkshires • JKA
Kyle Johnson
25920 145th St.
New Richland, MN, 56072
612-387-5434
kjjohns66@gmail.com


Tvrdik Farm Group, LLC • TFG
Jeffery Tvrdik
14460 Blue Stem Rd. SE
Glenwood, MN, 56334
320-283-5550
jeff.tvrdik@gmail.com


Triple M Farms • TMF
Myron Dammann
19517 670th Ave.
Elkton, MN, 55933
507-398-9081

Stassen Family Berks • SFB
Steve Stassen
1105 140th Ave. SE
Kerkhoven, MN, 56252
320-905-5306
steve.stassen@gmail.com


MISSOURI

AJC Berkshires • AJC
Adam & Julie Conover
634 SW 1201st Rd.
Holden, MO, 64040
816-676-8560
conoverju@gmail.com
ajcberkshires.com


Fitzwater Berks • FE
Kathryn Edwards, Phillip & Susan Fitzwater
215 Maple
Hardin, MO, 64035
660-707-2917


Gerlt Livestock • LIG
16624 Hwy C
Versailles, MO, 65084
573-378-7548
jwg_livestock@yahoo.com


Heimer Hampshires • HH
555 Birch Ln.
Taylor, MO, 63471
217-257-0138
JH@jheimer.com
heimerhamps.com


Hinnah Farms • HFBF
Kathryn Edwards, Phillip & Susan Fitzwater
30348 Queens Trl.
Gilliam, MO, 65330
660-784-2454 • 660-631-5454
hinnahfarms@hotmail.com



Howard Showpigs • TGHB
Greg, Tom, Braxton Howard
19409 CR J
Trimble, MO, 64492
816-632-8035



Tim Nevils • TKLC
28475 Morton Rd.
Green Ridge, MO, 65332
660-281-3793
ktnevil5@gmail.com


Strickland Pork Farms • STPF
Brian Strickland
7961 County Rd. 439
Jackson, MO, 63755
579-979-5433
bri.strick@gmail.com


Richard & Jill Norton • RJN
2668 State Hwy. OO
Theodosia, MO, 65761-6457
417-840-6871
ozarksheritagefarm@gmail.com


NEBRASKA

Evan Brown • EAB
10262 744 Rd.
Bertand, NE, 68927
308-991-1714
evanbrown66@yahoo.com


Robert Johansen • RJJ
3011 Co Rd. 21
Bennington, NE, 68007
402-478-4837


NEW YORK

Grays Homestead Farm • 56430
1109 Drum St.
Hogansburg, NY, 13655
315-514-4164
francinemgray@gmail.com


NORTH CAROLINA

Bravo Cattle • BRVO
John Barnes
379 York Rd.
Sumerfield, NC, 27358
252-230-0650
bravocattle@gmail.com
bravocattlellc.com


Tater Road Farms • TRFS
Tommy Ellington
4014 Mills Circle
Concord, NC, 28025
704-918-6609
taterroadfarms@gmail.com


NORTH DAKOTA

Michelle Schoenwald • RMCC
2988 Hwy. 23
Watford City, ND, 58854
701-770-7546
rlazysbaconseeds@icloud.com


OHIO

Back Roads Farm, LLC • ROAD

24271 County Rd. D
Archbold, OH, 43502
419-966-2238
backroadsfarmOH@gmail.com
backroadsfarmOH.com



Dan Huff & Family • DHF

1403 Parrot Station Rd.
Washington Court House, OH, 43160
740-335-6397 • 740-505-9066
jhuff6397@gmail.com



Gibson Girls • GBSN

4480 US Rt. 22 W
Circleville, OH, 43113
740-571-6226
gbsngirls@hotmail.com



Neanen Show Barrows • NEAN

1932 New Madison Coletown Rd.
New Madison, OH, 45346
937-423-9294
neanenshowbarrows@gmail.com



Paul Radabaugh • PMR

1930 N. Acadia Rd.
Spencerville, OH, 45887
419-230-7698
maconbaconshowpigs@gmail.com



Pierce & Odell • PWC Ron Pierce & Jeff Odell

9681 Markley Rd.
Laura, OH, 45337
937-694-7776
repierce@bright.net



Shipley & Snyder Berk • SHD Randy Shipley

8086 Marion Rd.
Newark, OH, 43055
740-745-2911
shipleyswine@yahoo.com
shipleyswine.com



Wippel Family Berks • WPF Jeff Wippel & Family

15085 London Rd.
Orient, OH, 43146
740-404-1148
oink.berks@gmail.com
wippelfamilyberks.com



OKLAHOMA

Daniel Powell • DPOW

11830 Locust Rd.
Henryetta, OK, 74437
918-319-7346
dbpowell83@yahoo.com



Outlier Genetics • OUTG

1655 W Camelback Rd.
Duncan, OK, 73533
580-641-3028
info@outliergenetics.com
outliergenetics.com



PENNSYLVANIA

Bennecoff Family Farm • TLB Todd Bennecoff Jr.

2335 Fuitz Ct.
Kutztown, PA, 19530
484-223-9431
jbennecoff23@yahoo.com

Heidi Benner • 1BHF

230 Benner Rd.
Gettysburg, PA, 17325
717-752-6015
hbenner23@gmail.com
midatlanticsires.com



Innerst Berkshires • GBI

814 Powells Valley Rd.
Red Lion, PA, 17356
717-880-8318
innerstberkshires@hotmail.com



James Parlett Jr. • JTP

288 Norris Rd.
Airville, PA, 17302
717-818-5786
parlett.gus@gmail.com



Karnick Family Farm • KARN

Dan Karnick
384 South St.
Waymart, PA, 18472
570-488-5948
dkarnick@echoes.net



Lee & Ryan Bechtel Showpigs • LRBS

814 Powells Valley Rd.
Halifax, PA, 17032
717-574-4223
tractortn75@comcast.net



Myers Show Pigs • MSPG Dean Myers

884 W Main St.
New Holland, PA, 17557
717-278-5824
dj_myers@me.com



Rattlesnake Mtn Farm • CBH Mark W. Hall

362 Hall Rd.
Julian, PA, 16844
814-574-3274
rattlesnakemtnfarm.com



SOUTH CAROLINA

Felix Villaverde • OVF

209 E Longfield Ln.
Woodruff, SC, 29388
864-982-1891
felixv89@gmail.com



Jonathan Niksarian • ROAM

815 Wrights Mill Rd.
Aiken, SC, 29801
803-646-9289
jonjoenik@gmail.com



TENNESSEE

Happy Heritage Farm • HHA1

3648 Beth Carr Rd.
White Pine, TN, 37890
571-426-1261 • 540-717-9347
happyheritageacres@gmail.com



Papillon Farm • ERLT Ed & Robin Tanner

1385 Wilhoit Rd.
Chuckey, TN, 37641
423-330-0796
tannerfam@bellsouth.net



Trillium Ridge Farm • LTRF Travis Loops

3236 Old Lowes Ferry Rd.
PO Box 157
Louisville, TN, 37777
865-388-6884
travisloope@gmail.com
trilliumridgefarm.com



TEXAS

B Squared Show Pigs • BSSS

440 FM 812
Red Rock, TX, 78662
512-629-2927 • 512-988-1570
bssshowstock@gmail.com



Curtis Houy • CHOY

643 Houy
Fredricksburg, TX, 78624
830-889-8457
sandra_houy@yahoo.com



Danny Belew • DBFS

PO Box 487
Tahoka, TX, 79373
806-998-4046
cmhalf@yahoo.com



Elrod's Show Pigs • EEP Diane Elrod

217 County Rd. 2141
Iredell, TX, 76649
830-889-8457
diane@elrodshowpigs.com
elrodshowpigs.com



MT Heart Livestock • TSSF
570 Santa Clara Loop
Marion, TX, 78124
210-287-3364
mtheartlivestock19@gmail.com
 


Real Hog Farms • CER
Chuck Real
15492 Real Rock Rd.
Marion, TX, 78124
830-827-7351
realhogfarms@att.net
realhogfarms.com
  

S&W Swine Productions • SWPS
Scott Sullivan
PO Box 1252
Robstown, TX, 78380
361-960-6725
ssullivan@hsconstructors.com
s-wswine.com
 

West Texas Genetics • HMAN
PO Box 34
Vancourt, TX, 76955
402-429-4946
cmhalf@yahoo.com
westtexasgenetics.com
 




VIRGINIA

Glass View Farm • GVF
Marshall R Glass
351 Hopper Creek Rd.
Natural Bridge Station, VA, 24579
540-291-1784
glassview@hotmail.com


John Patterson • RDMF
64 Red Mill Ln.
Crimora, VA, 24431
540-649-5759
redmill@newhopetel.net


WISCONSIN

Mikayla Wehrle • MWRA
E8283 Seefeld Rd.
New London, WI, 54961
920-279-2766
rickannw@gmail.com
wehrlelfrms.com
 

J&M Genetics, LLC • JMD
4110 N Britton Rd.
Union Grove, WI, 53182
262-206-4908
jmgenetics1@gmail.com
  

Roger Baur • BAUR
216323 State Hwy 107
Mosinee, WI, 54455
715-571-6166
mindy@mtc.net
 

Updated Berkshire Breed Sire DNA Policy

In an effort to allow Berkshire breeders to become more informed about selecting genetics that align with their individual goals, the ABA Board of Directors have updated the Sire DNA Policy to now include the Redement Napole (RN) gene: *Effective January 1, 2022, all sires used to register Berkshire litters need to be DNA banked and tested for the stress (HAL-1843) and Redement Napole (RN) genes. The RN test results can be negative, carrier, or positive for recording purposes.*

The Redement Napole gene has been found to lower ultimate pH and water holding capacity in pork. The Berkshire breed has been the staple of pork quality for over a century and the ABA believes requiring sires to have a known RN status provides additional value when making breeding and purchasing decisions.

This policy does not affect any boars that have already been RN tested. **If you have a boar that has already been DNA banked with a known stress status and has already sired registered litters in the past, you will still need to have those boars RN tested effective January 1, 2022.** It is the responsibility of the owner to ensure their boar is RN tested. The cost of the RN test alone is \$28 and the cost for both HAL-1843 and RN together is \$53. The ABA office staff is available to assist you as we work toward continued breed improvement and education.

We're Hiring: Office and Membership Services Assistant

This selected candidate will be expected to work no more than 30 hours per week and may require some weekend work during peak seasons.

Duties include but are not limited to*:

- Registration and transfer service of purebred swine
- Processing of mail
- Answer incoming phone calls
- Member customer service
- Mailing of membership packets, statements, newsletters, etc.
- Upkeep of databases and files

More information at americanberkshire.com.

Applicants must submit a cover letter, resume and references by mail or email to:

Cory Edge: cory@americanberkshire.com



Breeders Directory Listing

Please complete the following if you want to be listed across all platforms of the breeder's directory for the American Berkshire Association. If you do not fill out this form, your information will not be listed.

Save time and postage by completing the form online at www.americanberkshire.com

***Indicates required field**

Name/Farm Name*: _____

Breeder Number/Herd Mark*: _____

Address*: _____

City*: _____ State*: _____ Zip*: _____

Primary Phone*: _____ Secondary Phone: _____

E-mail Address (If applicable): _____

Website Address (If applicable): _____

Facebook Site (If applicable): _____

Number of years raising Berkshires? _____

1. Check a box for number of registered Berkshire gilts/sows you own*

☐ Less than 10 ☐ Less than 25 ☐ Less than 50 ☐ Less than 75 ☐ Less than 100 ☐ 100+

2. How do you market your pigs? *

(Circle all that apply)

Off the farm

Direct to Consumer

Through a feeder pig market

Through a marketing coop/group

Media (social media, newspapers, magazines)

Online sales

Live Sales and Type Conferences

3. My operation focuses on: *

(Circle all that apply)

Meat Quality Genetics

Show Pigs

Seed Stock

Feeder Pigs

Market Hogs

For the 2022 calendar year:

Please add my information to the Breeders Directory listing (\$25.00) \$ _____

(Includes all platforms, online or printed)

Please renew my American Berkshire Senior Membership (\$75.00) \$ _____

Total Enclosed: \$ _____

Payment can be made by check or credit card

Payments must be made payable to: American Berkshire Association

Card Number: _____ Expiration Date: _____ \ _____

Security Code: _____ Billing Zip: _____

Return to:

American Berkshire Association,

2637 Yeager Road, West Lafayette, IN 47906

Or email the form to Office@americanberkshire.com

BERKSHIRE OUTLOOK FOR 1922

by E.J. Barker, Thorntown, Ind.

We see nothing but optimism ahead for the Berkshire breeder. We grant that in many other lines are rather pessimistic, but hogs of any kind, purebred or for market purposes, properly handled, are sure to "save the day" for the farmer. Never in our time has it been so prominent as today, that it is the hogs will pay the mortgage if it is ever paid.

Then why not "Berkshire Hogs?"

They will convert this cheap feed into pork fully as economically as any living creature. Read the articles in press lately from some of our prominent packers, outlining the type of hog that they want and you will see that the Berkshire more fully represents that than any other breed. They do not hesitate in declaring against long coarse bone. Then I hope to see more Berkshires in the feed lot in the near future.

The breeder of Berkshires today is having a good trade in his surplus if they are good animals and properly put before the public.

We hope to see more of our new breeders join the American Berkshire Association, link up closer to it and help make this a banner year. It can't be done by sitting off and knocking the directors, but by closer touch and interest and suggestions. We may all work together as one team and at our annual meeting next December have a financial report we will be proud to hear. It cannot be done by merely wishing it were so, but as in other businesses more economical plans must be adopted. We must plan to make money before we should plan to spend the money. Here's hoping for better cooperation of all breeder and a real honest-to-goodness administration and year's work.



AMERICAN
BERKSHIRE
— ASSOCIATION —

BERKSHIRE BREED CLASSIFICATIONS

COLOR

1. Ideally 6 points of white: face, four legs, tip of the tail (unless tail is docked)
 - 3 of the four legs must be white
2. Must not have spotted or mottling pattern that is larger than a contiguous 93.5 square inches anywhere on the body on a mature pig.
3. Must not have any area of white skin that exceeds 93.5 square inches on the upper 2/3 of the body.
4. Cannot have white skin or hair that continuously encircles the body anywhere between the base of the ear and the base of the tail.
5. From the base of the ear forward a Berkshire cannot be solid white.
6. A Berkshire cannot have any skin color besides black and white.

EAR CARRIAGE

1. Ideal ear carriage is ridged and tight
2. Less desirable, but acceptable ear carriage is:
 - a.) ears that are larger than ascetically pleasing
 - b.) ear carriage that lacks rigidity

IDENTIFICATION REQUIREMENTS

1. Distinctively ear-notched at farrowing time
 - All pigs from the same litter must have the same litter notch
 - Right ear is for the litter number
 - Left ear is for the individual pig number
 - No two litters on the farm can be ear-notched the same during the same farrowing season (Jan. 1 - June 30 and July 1 - Dec. 31 of the same year)

DISQUALIFICATION FOR REGISTRATION OF BREEDING ANIMALS

The presence of one or more of the following:

- a.) less than 6 functional teats on each side
- b.) the presence of one or more swirls on the upper half of the body
- c.) total blindness
- d.) rectal or uterine prolapse
- e.) hermaphroditism
- f.) atresia ani
- g.) cryptorchidism or monorchidism
- h.) scrotal and/or umbilical hernia
- i.) ear carriage that "breaks" to the point in which ears are continually directed in a downward angle

AJC BERKSHIRE FEMALES

Productive and Full of Performance



AJC9 Hustle Belle 10-7

- 10-7 littermates were part of our 2019 #1 Super Sire Pen and #2 High Meat Quality Pen, being the #1 Average Daily Gain, #1 Sensory Juiciness and #1 Cooking Loss.
- The pen was sired by AJC6 Galileo 19-1.
- AJC9 Hustle Belle 10-7's 2nd litter, born August 9, 2020, holds the record at AJC for the largest litter ever farrowed with **22 pigs**.
- SPI 100.4; MLI 113.4; TSI 130.3

- A daughter of WAT5 Blackwater 6-1, **SHE IS THE GRANDMOTHER OF PIGS IN THE 2021 PROGENY TEST AND IS ALWAYS A FAVORITE OF VISITORS.**
- With sows and daughters working across the United States, 23-9 consistently passes on her structural soundness, eye appeal and foot & udder quality.
- 23-9 was the dam of our 2019 STC show string, 1 boar and 2 gilts sired by AJC7 Diamond Lad 3-1.
- This show string sold to North Carolina, Nebraska and Iowa. All of those buyers have been back to AJC and purchased more hogs.



AJC6 Sterling Lady 23-9

AJC BERKSHIRES

"Genetics That Work As Hard As You Do!"

ADAM & JULIE CONOVER
634 SW 1201 Rd • HOLDEN, MO 64040
816-676-8560 (c) • 641-227-3537 (o)
Herd Located In Baxter, IA

Berkshires - The Oldest Swine Breed In The World

BONNIE ACRES FARM

The Tom Conover Family Holstein, IA

Continuing on the Legacy

AL & JEANNE CONOVER
P.O. Box 9, BAXTER IA, 50028
515-491-8078 (c) • 641-227-3537 (o)